



POSITIVE MATERIAL IDENTIFICATION (PMI)

With over 30 years of metallurgical testing experience and an extensive metallurgical laboratory, Partek can provide Positive Material Identification (PMI) and Grade Identification at our laboratory or customer job site.



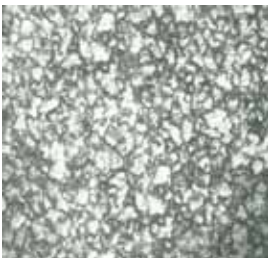
PMI

Partek's spectrometer detects wave lengths of carbon to provide full characteristics of:

- Carbon & Alloy Steels
- Stainless Steels
- Aluminum Alloys
- Nickel Base Alloys
- Tool Steel

Grade Identification

Partek performs hardness and chemical analyses to identify any specific ASTM/API grade material.



Field Metallographic Replication

Partek uses a nondestructive sampling procedure that records and preserves the topography of a metallographic specimen to determine the stress

limits of metals. Our field metallographic replication services are especially useful to the fabrication industry for rolling metals.



Partek's portable equipment allows the company to conduct ASTM Grade Identification and Grade Analysis at your job site.

(over)

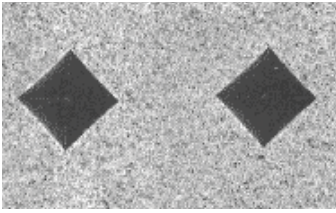
Toll free: 1-800-445-4619 info@PartekLab.com www.PartekLab.com

CORPORATE OFFICE MAIN LABORATORY: 225 South Hollywood Road, Houma, LA 70360, Phone: 985-851-5310, Fax: 985-851-5312

WELDER QUALIFICATION DIVISION: 2050 Coteau Road, Houma, LA 70364, Phone: 985-851-4957

POSITIVE MATERIAL IDENTIFICATION (PMI)

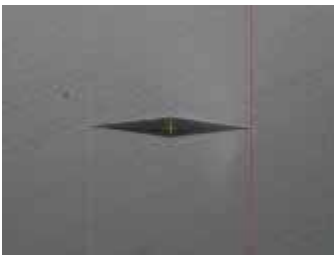
(continued)



Vickers, 400x magnification

Microhardness Testing

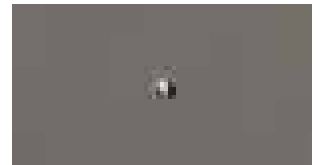
- Vickers
- Knoop



Knoop, 400x magnification

Macrohardness Testing

- Rockwell
- Brinell



Rockwell

Metallographic Examination

Photographic Archival Equipment



Brinell



Toll free: 1-800-445-4619 info@PartekLab.com www.PartekLab.com

CORPORATE OFFICE MAIN LABORATORY: 225 South Hollywood Road, Houma, LA 70360, Phone: 985-851-5310, Fax: 985-851-5312

WELDER QUALIFICATION DIVISION: 2050 Coteau Road, Houma, LA 70364, Phone: 985-851-4957